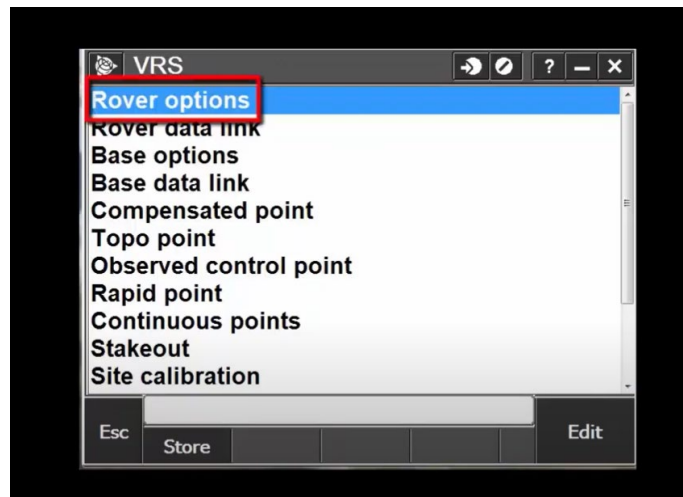


## Configuring Trimble Receiver on Real Time Networks

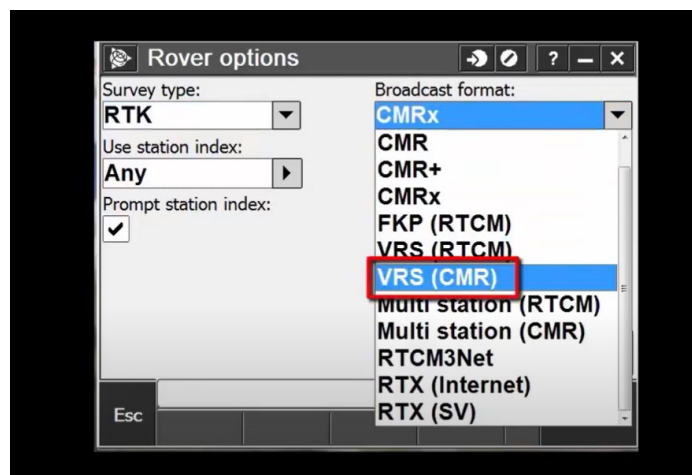
Step 1.



After the initial Job Setup go to

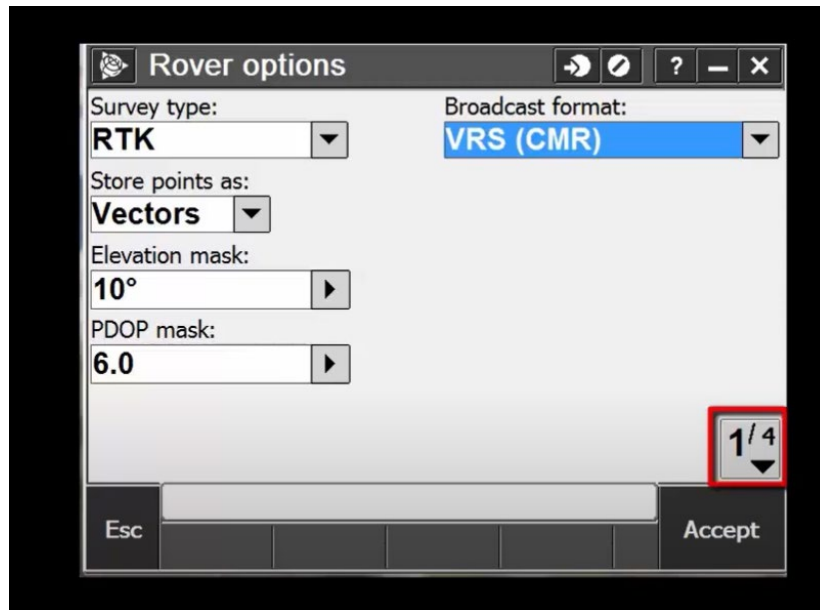
- Rover options

Step 2.



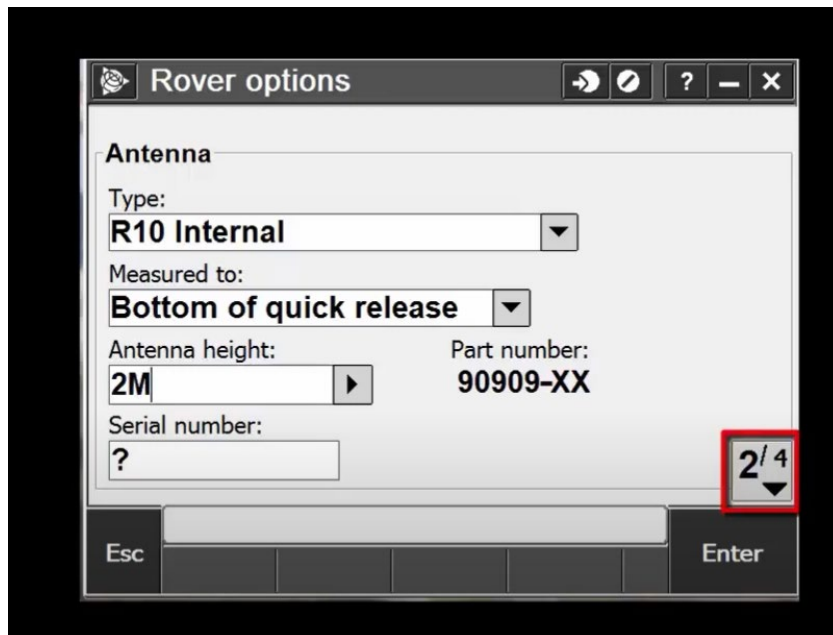
- Set the Broadcast format to VRS (CMR)

Step 3.



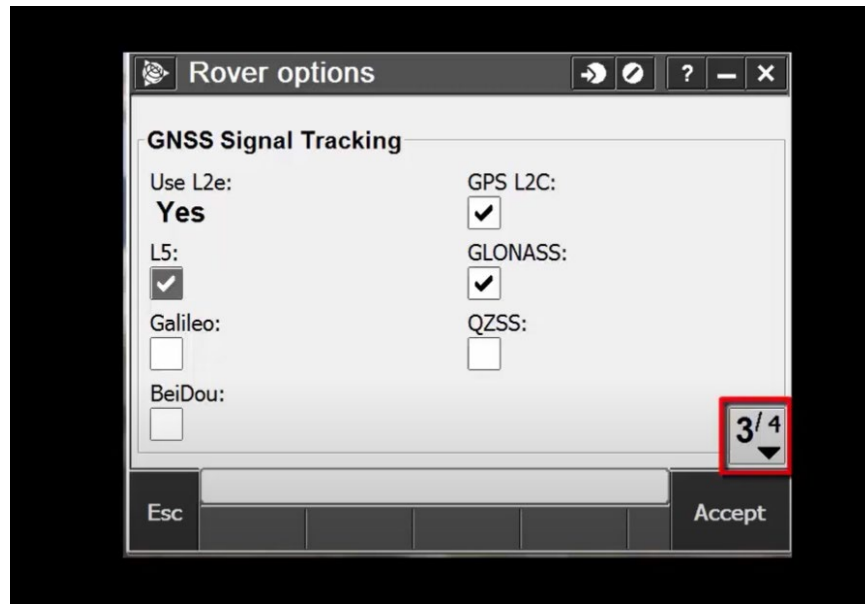
- 1/4 Tab

Step 4.



- Next screen should look like this
- 2/4 Tab

## Step 5.

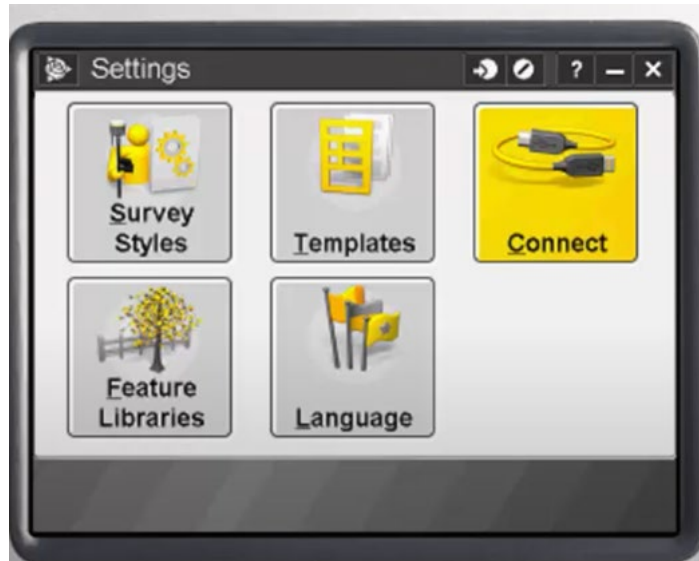


- Here we recommend turning on **ALL** the constellations. (The ArDOT Network tracks all constellations)
- Accept Tab

## Step 6. Setting up GNSS Contact



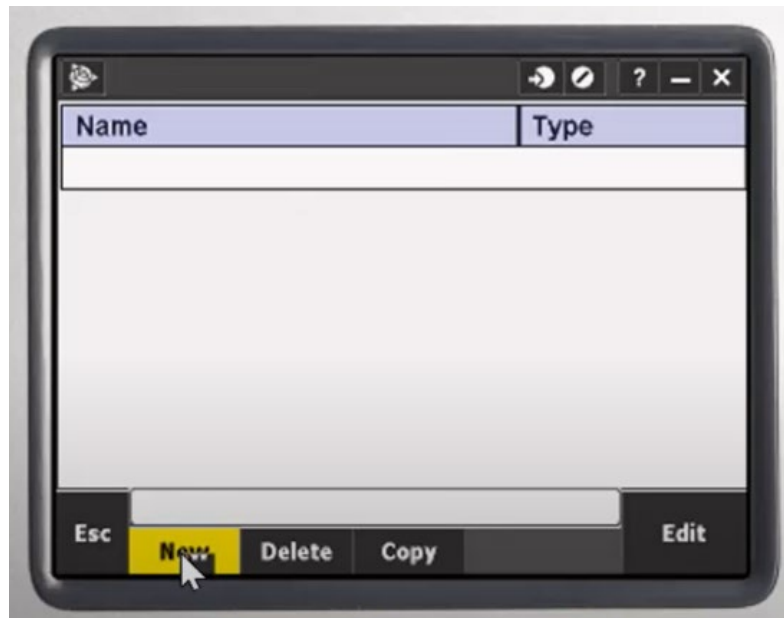
- Back to Settings



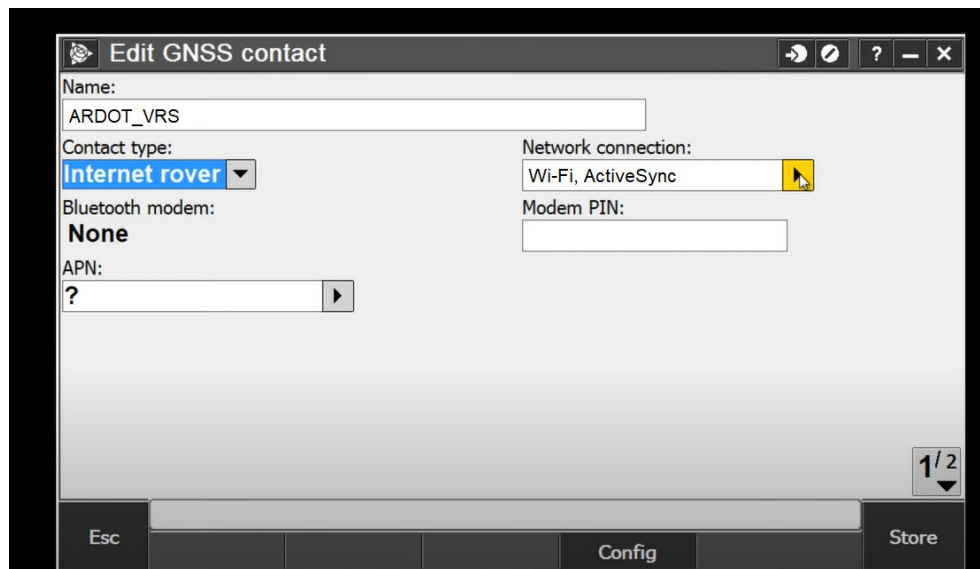
- Connect



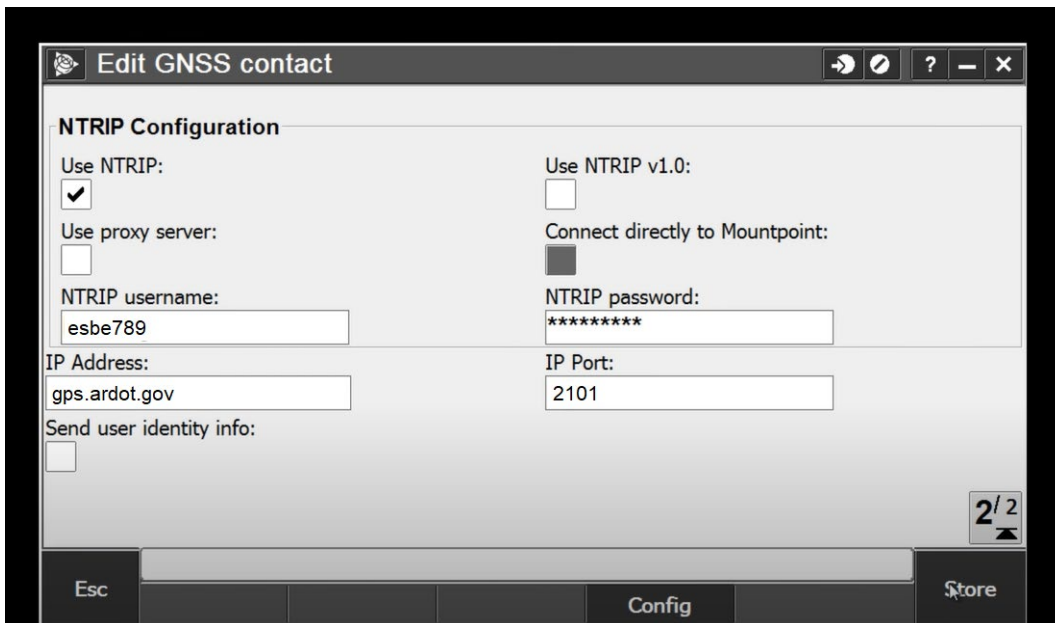
- GNSS contacts



- Create New

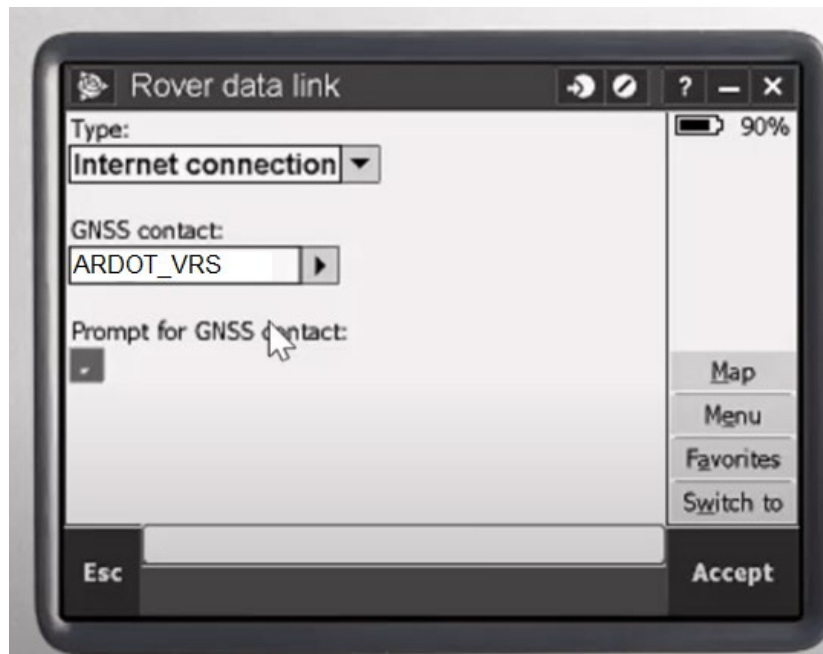


- Name it something simple ex. ARDOT\_VRS
- Contact Type is Internet Rover
- 1/2 Tab



- Check Use NTRIP
- You have the option to Connect directly to Mountpoint if you choose that you will have to manually enter that Mountpoint name. We recommend this for all Trimble users. Below is the list of Trimble Mountpoints offered.
- ARDOT\_RTX\_CMRp
- ARDOT\_RTX\_CMRx
- MS\_CMRp
- MS\_CMRx
- Enter your Username and Password that you received from ARDOT
- Enter the IP address and the Port number
- Store

## Step 7. Rover Data Link

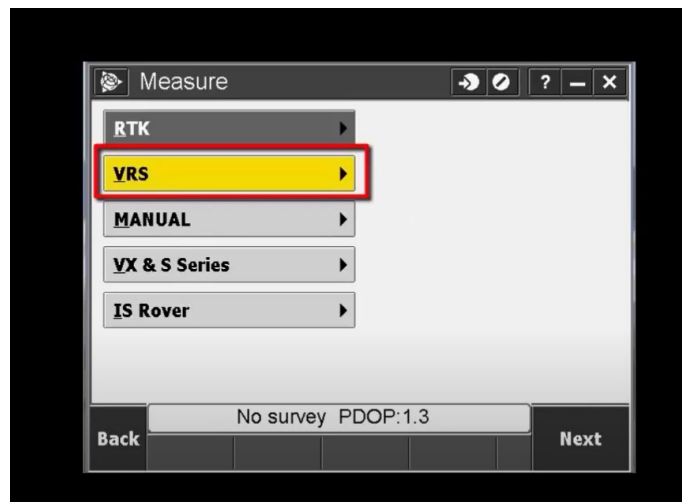


- Type Internet connection
- Your GNSS contact info will populate when you hit the > tab
- Accept

## Step 8. Measure

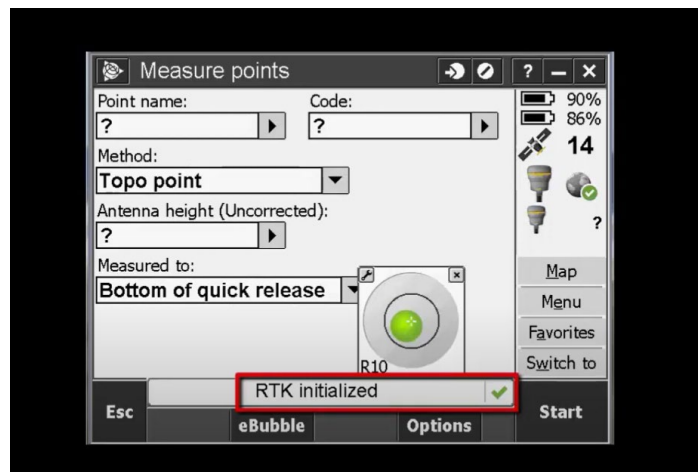
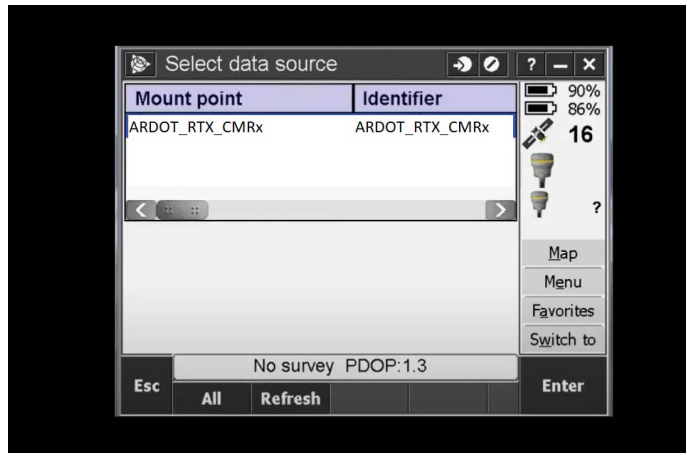


- Measure



- VRS





- Initialize

If there are any questions, please feel free to reach out to  
Arkansas Department of Transportation  
Surveys Division  
Eric Benson  
Geodetic Surveys Coordinator  
501-569-2432  
Eric.Benson@ardot.gov