



ARKANSAS DEPARTMENT OF TRANSPORTATION

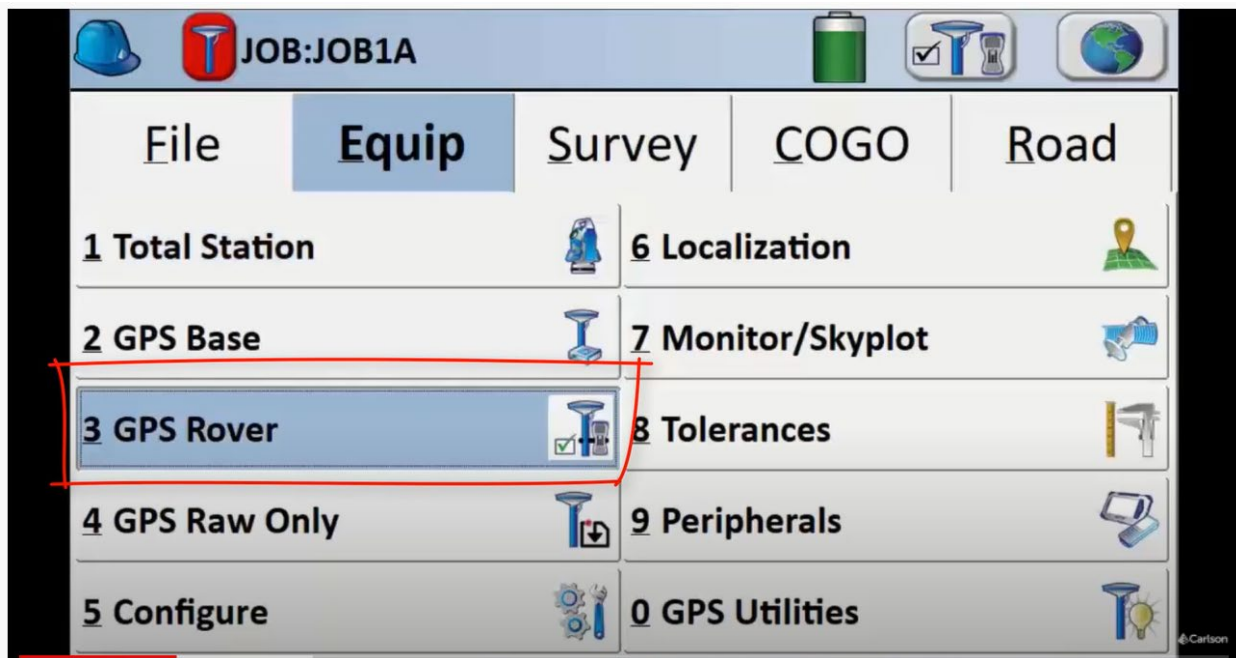
ArDOT.gov | IDriveArkansas.com | Lorie H. Tudor, P.E., Director

SURVEYS DIVISION

10324 Interstate 30 | P.O. Box 2261 | Little Rock, AR 72203-2261 | Phone: 501.569.2341 | Fax: 501.569.2016

## Configuring Receiver on Real Time Networks

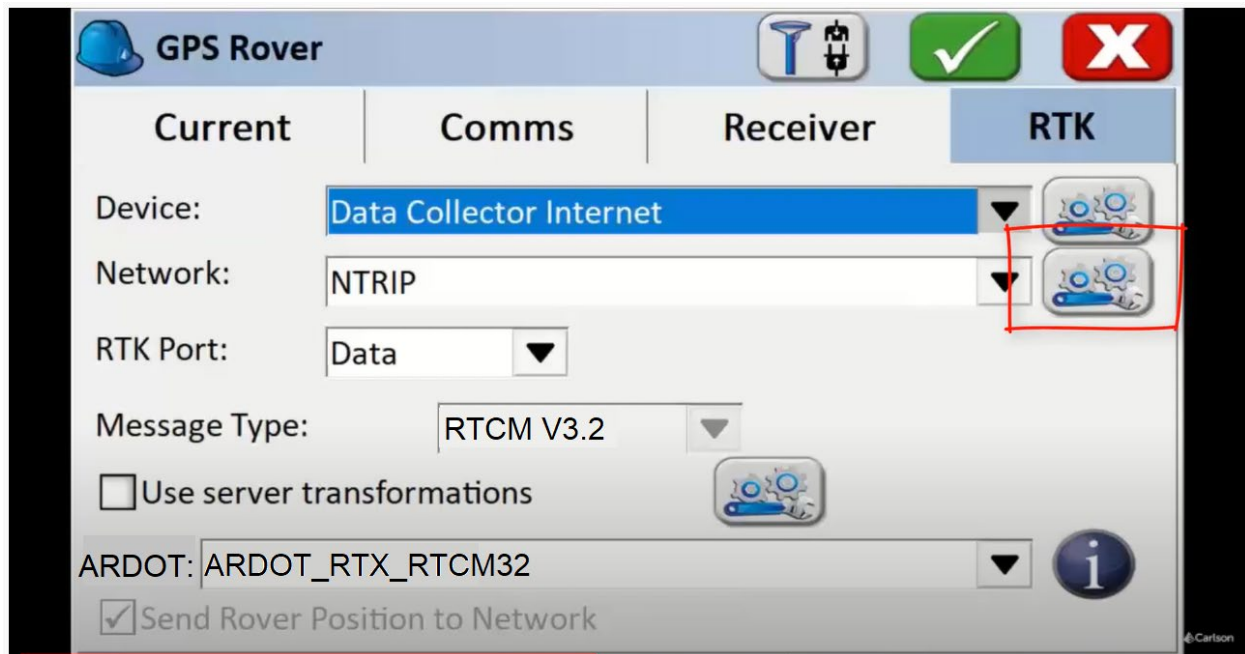
Step 1.



After the initial Job Setup go to

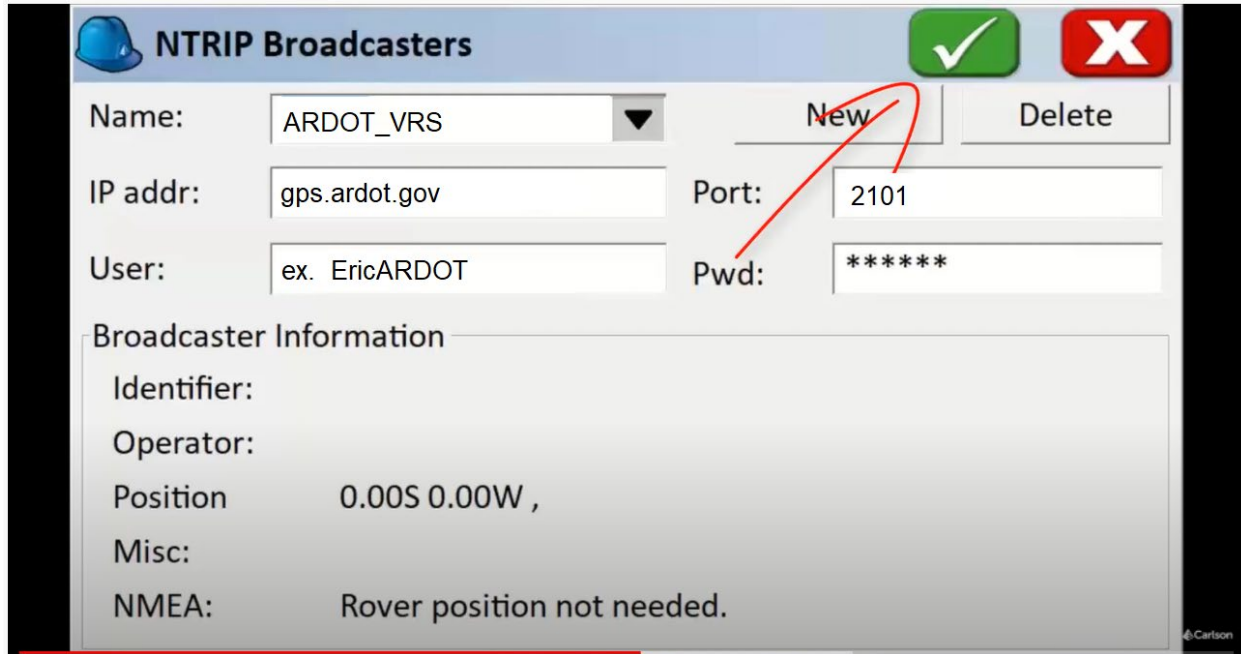
- Equipment Tab
- GPS Rover

## Step 2.



- RTK Tab
- Make sure your device is set to Data Collector internet (**YOUR DATA COLLECTOR MUST BE HOOKED TO WIFI ex. Mobile Hotspot**)  
Note: If you have a 4G compatible Rover you set the Device to Internal GSM  
4G Rovers will have a cellular/internet signal already.
- Set Network to NTRIP
- Press the configure button to the right of NTRIP

### Step 3.



**NTRIP Broadcasters**

Name: ARDOT\_VRS

IP addr: gps.ardot.gov Port: 2101

User: ex. EricARDOT Pwd: \*\*\*\*\*

Broadcaster Information

Identifier:

Operator:

Position 0.00S 0.00W ,

Misc:

NMEA: Rover position not needed.

- If this is the first time setting up. Press NEW. Give the Broadcaster a name (ex. ARDOT\_VRS). Then enter your credentials that you received from ArDOT along with the ip address and Port #.
- Then green check.

Step 4.

**Bases for ARDOT\_VRS**

Name: ARDOT\_RTX\_RTCM32

User Name: ARDOT\_RTX\_RTCM31  
ARDOT\_RTX\_CMRp  
ARDOT\_RTX\_CMRx

Identifier: ARDOT\_RTX\_CMRx  
MS\_CMRp  
MS\_CMRx

Short Id: MS\_CMRx  
MS\_RTCM31  
MS\_RTCM32

Type: MS\_RTCM31  
MS\_RTCM32

Format:

Position:

Misc:

Send Rover Position to Network

Password: \*\*\*\*\*

New Delete

© Carlson

- Choose from the dropdown list the Base you want to use  
For any manufacturer other than Trimble you will use a RTCM Mountpoint
- Note RTCM 3.1 will only track GPS and GLONASS

Step 5.

**Bases for ARDOT\_VRS**

Name:  ▼

User Name:  Password:

Identifier:

Short Id:

Type:

Format:

Position:

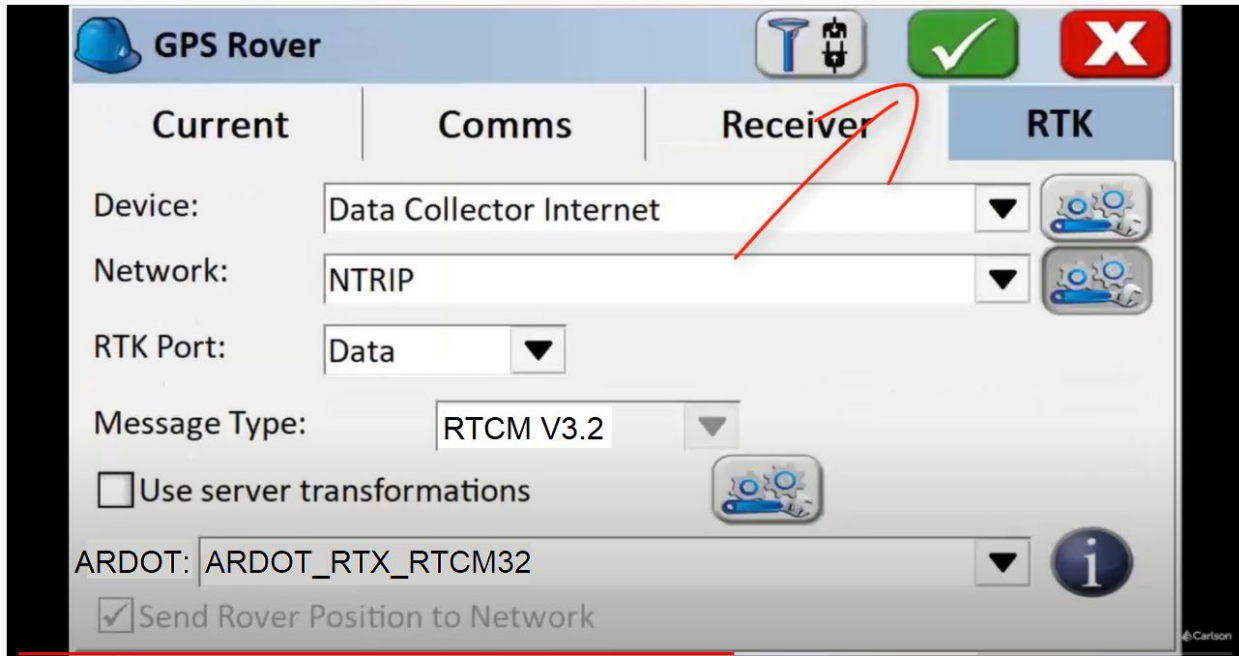
Misc:

Send Rover Position to Network

Carlson

- When you find the Mountpoint you want Green Check

Step 6.



- Your Screen should look like this.
- Green check and you should start to initialize

If there are any questions, please feel free to reach out to  
Arkansas Department of Transportation  
Surveys Division  
Eric Benson  
Geodetic Surveys Coordinator  
501-569-2432  
Eric.Benson@ardot.gov